



r o o f d e c k



s e r v i c e | d e p e n d a b i l i t y | s u p p o r t

whatever it takes, whenever you need it

◀ **Knowledgeable, courteous, caring employees throughout our ranks.**

We're a "family business"... no "big corporate" attitude here! We genuinely appreciate our customers' patronage and trust, handling every order, regardless of size, with the utmost care and attention.

◀ **Prompt, reliable deliveries...**

often producing and shipping orders as quickly as within 24 hours.

◀ **Guaranteed quality.** Our production staff are true craftsmen, not just interested in getting the job done, but in doing it perfectly.

◀ **Large inventory** of gauges and profiles so Cordeck is prepared to get it there when you need it.

◀ **Cut to Length.** All orders are cut to your specifications to meet your on-site needs.

**At Cordeck, we're devoted
to our customers.
We stand ready to earn,
and keep, your full
confidence and trust.**

"When we

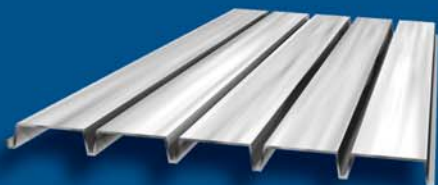
build

let us think that we build forever."

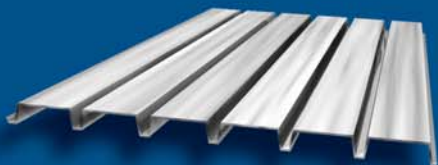
-John Ruskin, The Seven Lamps of Architecture (1849)

roofdeck

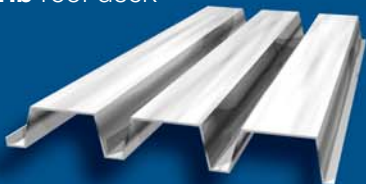
1.5" "A" narrow rib roof deck



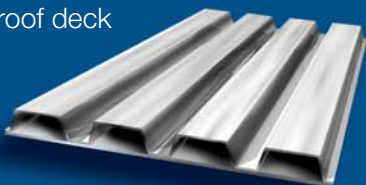
1.5" "F" intermediate rib roof deck



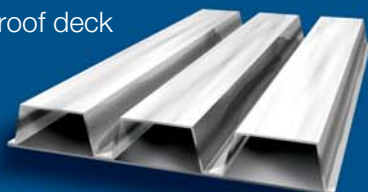
3" "N" deep rib roof deck



1.5" cellular roof deck



3.0" cellular roof deck

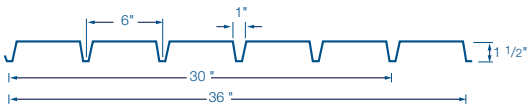


roofs, mezzanines, canopies & shelving

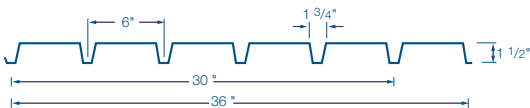
produced to length specifications

short lead time & prompt delivery

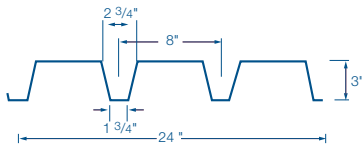
various finishes



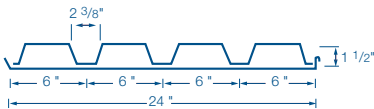
available in gauges **22-18**



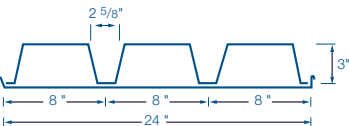
available in gauges **22-18**



available in gauges **22-16** **also available** in acoustical

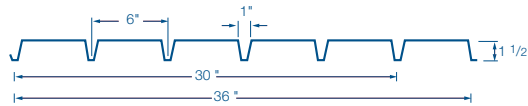
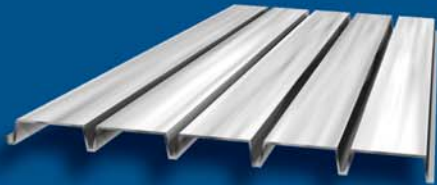


also available in acoustical



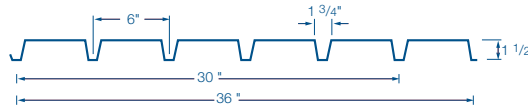
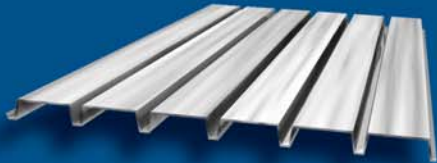
roofdeck

1.5" "A" narrow rib roof deck



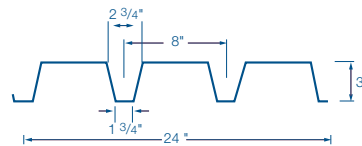
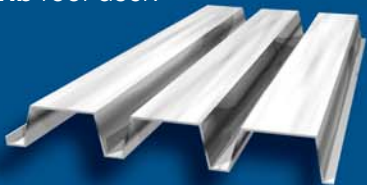
available in gauges 22-18

1.5" "F" intermediate rib roof deck



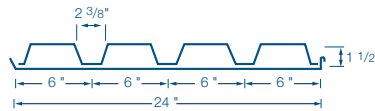
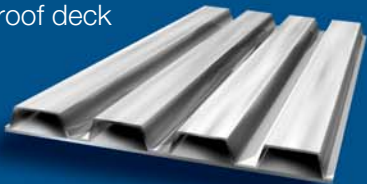
available in gauges 22-18

3" "N" deep rib roof deck



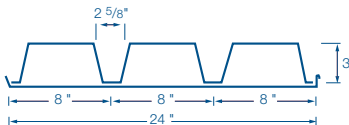
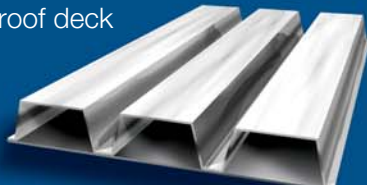
available in gauges 22-16 also available in acoustical

1.5" cellular roof deck



also available in acoustical

3.0" cellular roof deck



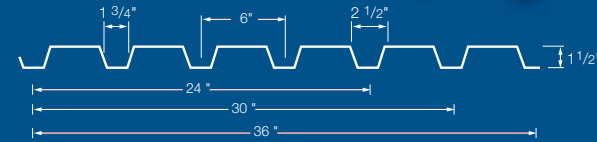
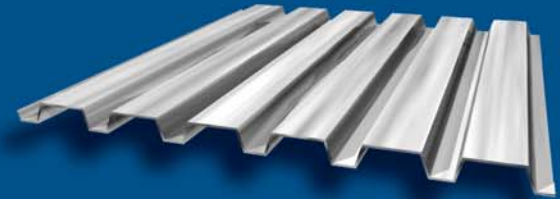
roofs, mezzanines, canopies & shelving

produced to length specifications

short lead time & prompt delivery

various finishes

1.5" "B" wider rib roofdeck



available in gauges 22-16 also available in acoustical

section properties, type B-36, B-30 and B-24

type	design thickness	I In./ft.	Sp In./ft.	Sn In./ft.	weight - psf	
					galv.	ptd.
22	.0295	.164	.192	.198	1.81	1.73
20	.0358	.212	.243	.255	2.16	2.08
18	.0474	.306	.331	.341	2.85	2.77

allowable uniform total load, PSF-type B-36, B-30 and B-24

number of spans	type	spans (ft.)													
		3.5	4	4.5	5	5.5	6	6.5	7	7.5	8	8.5	9	9.5	10
one	22	207	158	125	101	84	70	60	52	45	40	35	31	28	25
	20	262	201	158	128	106	89	76	65	57	50	44	40	36	32
	18	356	273	215	175	144	121	103	89	78	68	60	54	48	44
two	22	213	163	129	105	86	73	62	53	46	41	36	32	29	26
	20	275	210	166	135	111	93	80	69	60	53	47	42	37	34
	18	368	281	222	180	149	125	107	92	80	70	62	56	50	45
three	22	267	204	161	131	108	91	77	67	58	51	45	40	36	33
	20	343	263	208	168	139	117	100	86	75	66	58	52	47	42
	18	460	352	278	225	186	156	133	115	100	88	78	70	62	56

recommended maximum spans for construction maintenance load

standard for 1.5" wide rib roof deck as published by the SDI.

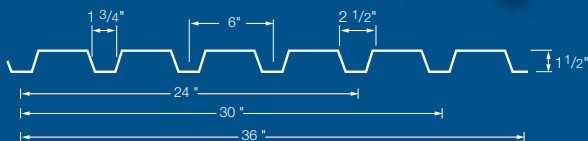
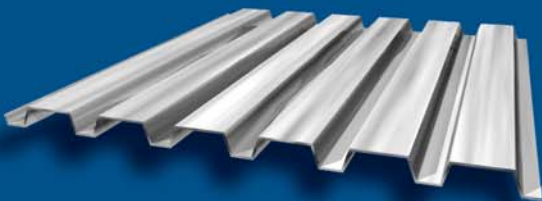
design	22ga	20ga	18ga
one span	5'6"	6'3"	7'6"
two or more spans	6'6"	7'5"	8'10"
max recommended cantilever spans	1'11"	2'4"	2'10"

factory mutual approved spans for Cordeck's wide rib roof deck

22ga	6'0"
20ga	6'5"
18ga	7'5"



1.5" "B" widerib roofdeck



available in gauges 22-16 also available in acoustical

section properties, type B-36, B-30 and B-24

type	design thickness	I in. ⁴ /ft.	Sp in. ³ /ft.	Sn in. ³ /ft.	weight - psf	
					galv.	ptd.
22	.0295	.164	.192	.198	1.81	1.73
20	.0358	.212	.243	.255	2.16	2.08
18	.0474	.306	.331	.341	2.85	2.77

allowable uniform total load, PSF-type B-36, B-30 and B-24

		spans (ft.)													
number of spans	type	3.5	4	4.5	5	5.5	6	6.5	7	7.5	8	8.5	9	9.5	10
one	22	207	158	125	101	84	70	60	52	45	40	35	31	28	25
	20	262	201	158	128	106	89	76	65	57	50	44	40	36	32
	18	356	273	215	175	144	121	103	89	78	68	60	54	48	44
two	22	213	163	129	105	86	73	62	53	46	41	36	32	29	26
	20	275	210	166	135	111	93	80	69	60	53	47	42	37	34
	18	368	281	222	180	149	125	107	92	80	70	62	56	50	45
three	22	267	204	161	131	108	91	77	67	58	51	45	40	36	33
	20	343	263	208	168	139	117	100	86	75	66	58	52	47	42
	18	460	352	278	225	186	156	133	115	100	88	78	70	62	56

recommended maximum spans for construction maintenance load

standard for 1.5" wide rib roof deck
as published by the SDI.

design	22ga	20ga	18ga
one span	5'6"	6'3"	7'6"
two or more spans	6'6"	7'5"	8'10"
max recommended cantilever spans	1'11"	2'4"	2'10"

factory mutual
approved spans
for Cordeck's
wide rib roof deck

22ga	6'0"
20ga	6'5"
18ga	7'5"



sheetmetal, roofdeck & miscellaneous accessories

state-of-the-art equipment
for extremely accurate part creation

capability
for even the most sophisticated part requirements

certified technicians
dedicated to consistent product quality

produced
to individual specifications

pvc strippable film
to protect product finish

wide selection
of custom color finishes

short lead times
and prompt delivery to all locations



sumppan



rubberclosure



parapetflashing



deckplate



sideclosure



angleclosure



ridgeplate



valleyplate



finishstrip



zclosure



jchannel



capeavetrim



highendtrim



detailedvalley



gravelstop



copingcap



gablecaptrim



tekscrews



Headquartered in Kenosha, Wisconsin, KAM Industries, Ltd., d/b/a Cordeck operates a **modern, efficient manufacturing plant, encompassing almost 100,000 square feet** on 20 acres. Cordeck's manufacturing lines include **Roof Deck, Floor Deck, Form Deck, Electrified Deck Systems**, and related accessories. Our products are strong and corrosion resistant, featuring Galvanized, Galvanized Prepainted and Cold Rolled Prepainted Steels, Kynar 500® trim, structural-grade, with G90 or G60 zinc-galvanized coatings.

Each member of our team is a prized contributor to customer satisfaction and Cordeck's advancement. Our centralized location facilitates **prompt, efficient production and shipping** to our many, loyal customers, throughout the United States, North America and beyond.

The company was formally established in 1995, though our founders offer the benefits of **over 30 years, hands-on experience** in ironworking and building construction. **Truly, "iron" runs through Cordeck's veins!** Since the firm's beginning, sales have shown strong and steady growth. That success has been galvanized by **our employees' unwavering, total dedication to unparalleled customer satisfaction.**

whatever it takes, whenever you need it