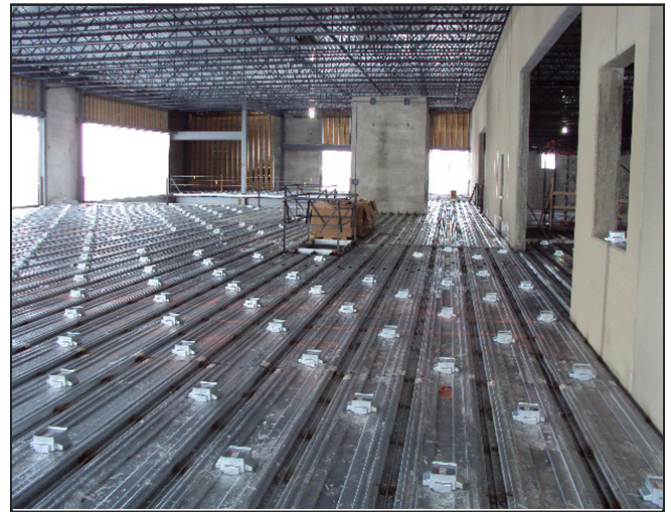




Walkerdeck®* System Cellular Floor Decking

Walkerdeck* Offers Complete Cable Protection in Raceway and Activations

Walkerdeck, a registered trademark of The Wiremold Company, Composite Cellular Floor Decking Systems provide the solution for in floor wire and cable management. Walkerdeck* is ideally suited for offices, call centers, libraries, recreation centers, casinos and robotic warehouses. By incorporating Walkerdeck* as your wire management system, you can be assured your project design is “**Future Ready**”. To meet the demand for high capacity, Cordeck provides the largest cellular raceway available. Walkerdeck* provides excellent structural strength for composite floor design loads and long clear spans without the use of shoring. The Walkerdeck* System is fed with trenchduct from the closet locations. The trenchduct is available in various widths: full, intermittent or bottomless and is internally divided for power and communications cabling. FloorPort Service Fittings are available in styles to fit any point-of-use application. FloorPort activations provide power and data services to the workstation from one location. UL fire classified designs are available for various hourly ratings on all cellular deck systems floor assemblies. All cellular deck, fittings and activations are UL listed to U.S. and Canadian safety standards and provide ground continuity in accordance with electrical codes.



An economical steel floor decking for power and communication services.



Trenchduct utilized to feed wires and cables to Walkerdeck*.

In Floor Cellular Raceway Systems Features & Benefits

Various sizes and capacities. Cordeck's In Floor Cellular Raceway System can be customized to the capacity required for the building project.

WDR provides greatest structural strength. Up to 13' 5" [4.089] clear span without shoring in a three span application.

G90 galvanized steel construction. Industry leader in cellular raceway corrosion protection.

Zinc die-cast preset of single construction with integral installation flange.

Industry leading capacity with WDR3. Power (8.5 in²) [5,483mm²] and communications (37.6 in²) [24,252mm²] will accommodate adds, moves and changes long after others have reached their capacity.

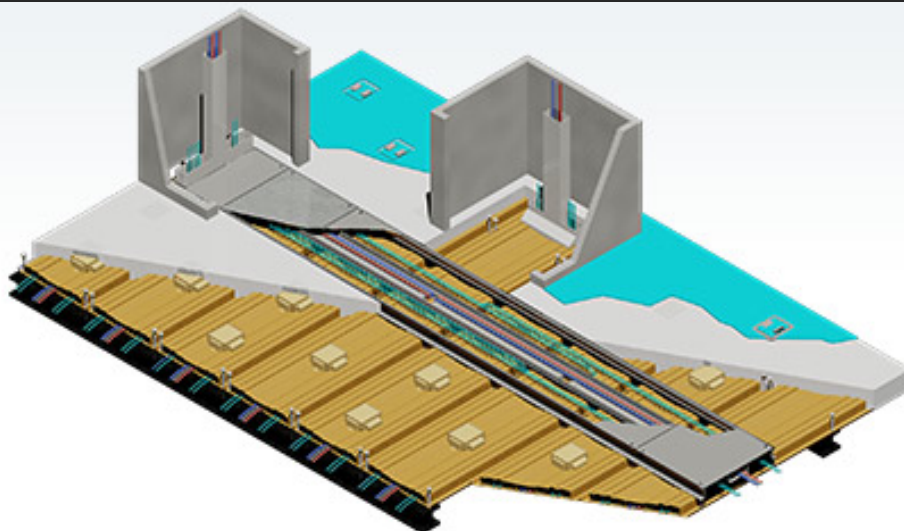
Bend radius protection. Raceway and service fittings offer cable protection at corners that ensure cable protection.

Data connectivity options. Accepts industry standard and proprietary devices from a wide range of manufacturers to provide a seamless and aesthetically pleasing interface for voice, data, audio, video and security applications at the point-of-use. A wide selection of data and bezel options available for use with Ortronics® Track Jack® Series II devices.

Exceeds UL scrub water requirements. FloorPort Service fittings provide protection from floor cleaning devices such as carpet scrubbers and wet mops.

AutoCAD® and BIM model drawings transferred electronically for concise design time collaboration.

Bundle placement plans are provided to ensure correct placement of the floor system parts during unloading and hoisting to build framework.



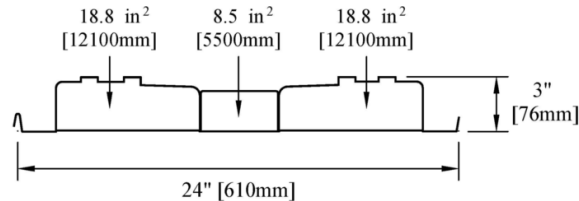
Walkerdeck*

Description/Specifications

Profile / Bottom
Gauge

WDR3 -20/20
-18/20
-18/18
-16/18
-16/16

3" Walkerdeck* Cellular Composite Metal Deck
Custom cut to length up to 45' [13.761m] long with prepunched preset opening on minimum 24" [610mm] centers. Suffix indicates gauge of steel. Wire fill capacity charts included on page 4.

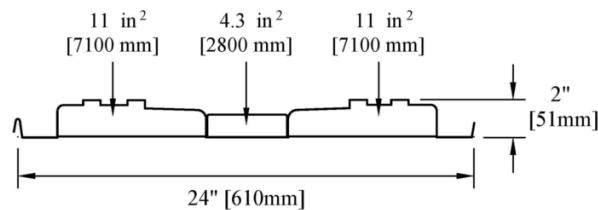


Profile / Bottom
Gauge

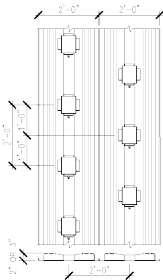
WDR2 -20/20
-18/20
-18/18
-16/18
-16/16

2" Walkerdeck* Cellular Composite Metal Deck
Custom cut to length up to 45' [13.761m] long with prepunched preset opening on minimum 24" [610mm] centers. Suffix indicates gauge of steel.

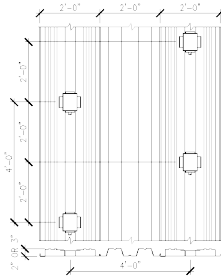
Wire fill capacity charts included on page 4.



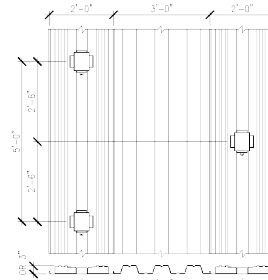
Typical Module Spacing. Other spacing is available.



2'x2' preset module
One preset outlet box
for every 4 sq. ft.



4x x 4' preset module one
preset outlet box for every
16 sq. ft.



5'x5' preset module one pre-
set outlet box for every 25 sq.
ft.

Walkerdeck* System Components

Description/Specifications

PK200 2" [51MM]

PK250 2 1/2" [64MM]

PK300 3" [76MM]

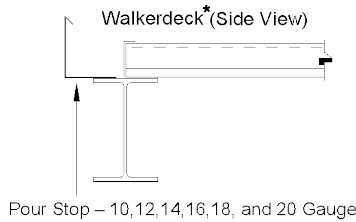
PK325 3 1/4" [83MM]



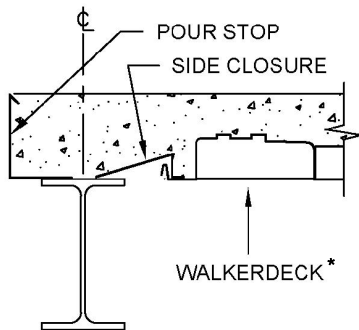
Triple Service Preset - Made of zinc die-cast construction with removable steel cap that is recessed for concrete pour. Preset is capable of housing two duplex power receptacles & up to eight voice/communication connectors. Preset has tapped openings for mounting internal brackets and floorport cover plates. The presets are field installed using 3/16" (4.8mm) pop rivet (not provided).

Walkerdeck* System Typical Construction Details

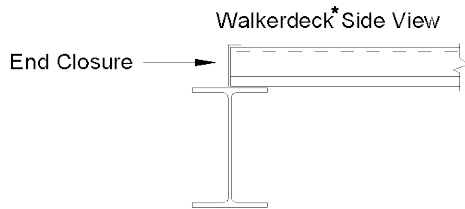
Description/Specifications



Pour Stop - Used to frame floor perimeter and large floor openings. Furnished in 10' (3.05m) lengths.



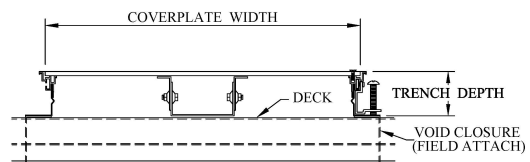
Side Closure - Used to close space between floor deck and girder. Furnished in 10' (3.05m) lengths.



End Closure - Used to close off ends of decking prior to concrete pour. Furnished in 10' (3.05m) lengths.

Trenchduct Feeder - In Floor Cellular Deck Systems

The primary feeder system for the In Floor Cellular Deck Systems is trenchduct. The trenchduct is typically furnished as a bottomless product to facilitate feeding the electrical cables into the cellular deck raceway. Roller leveled cover plates (1/4" [6.4mm] thick) are held in place with stainless steel screws. Reversible vinyl trim is included for tile floor covering. Aluminum and 3/8" [9.5mm] thick covers are available.



TRENCHDUCT (BOTTOMLESS)
Also available in Intermittent & Full Bottom

Note: The placement of the trenchduct will interrupt the structural continuity of the composite floor slab. Due to this interruption, the steel deck must carry the entire load of the floor at these locations. Additional supports may be required for the floor system at the trenchduct locations. Cordeck provides design assistance for the spacing of the supports, if required.

Walkerdeck* Wire Fill Capacities - Power

WIRE SIZE AWG	DIAMETER		AREA (IN ²)		WDR2 (4.3 SQ. IN. [2774 SQ. MM])	WDR3 (8.5 SQ. IN. [5484 SQ. MM])
	Inches	[mm]	Sq. In.	[Sq. mm]	40% FILL	40% FILL
14	.111	[2.8]	0.010	[6.5]	171	351
12	.130	[3.3]	0.013	[8.4]	129	256
10	.164	[4.1]	0.021	[13.5]	82	161
8	.216	[5.4]	0.037	[23.9]	47	93
6	.254	[6.4]	0.051	[32.9]	34	67
4	.324	[8.2]	0.082	[52.9]	21	41

Walkerdeck* Wire Fill Capacities - Communications

	DIAMETER		AREA (IN ²)		WDR2 (11.0 SQ. IN. [7097 SQ. MM])	WDR3 (18.8 SQ. IN. [12130 SQ. MM])
	Inches	[mm]	Sq. In.	[Sq. mm]	40% FILL	40% FILL
UNSHIELDED TWISTED PAIR						
4-PAIR, CAT 5e	.220	[5.6]	.038	[24.5]	116	198
4-PAIR, CAT 6	.250	[6.4]	.049	[31.7]	89	153
TELEPHONE						
2-PAIR, 24 AWG	.140	[3.5]	.015	[9.7]	285	488
4-PAIR, 24 AWG	.190	[4.8]	.028	[18.1]	155	265
25-PAIR, 24 AWG	.410	[10.4]	.132	[85.2]	33	56
COAXIAL						
RG58/U	.195	[4.9]	.030	[19.4]	147	252
RG59/U	.242	[6.1]	.046	[29.7]	94	162
RG6/U	.270	[6.8]	.057	[36.8]	6	130
SHIELD TWISTED PAIR						
TYPE 1	.390	[9.9]	.119	[76.8]	36	62
TYPE 2	.465	[11.8]	.170	[109.7]	26	44
TYPE 3	.245	[6.2]	.047	[30.3]	92	158
FIBER OPTICS						
2-STRAND	.180	[4.6]	.025	[16.1]	172	296
4-STRAND	.190	[4.8]	.028	[18.1]	154	264
6-STRAND	.210	[5.3]	.035	[22.6]	126	216
FIBER ZIP CORD	.110	[2.8]	.010	[6.5]	462	783

NOTE: Wire diameters can vary depending on manufacturer. Verify diameter and adjust fill capacities as required.

**Walkerdeck is a registered trademark of The Wiremold Company*