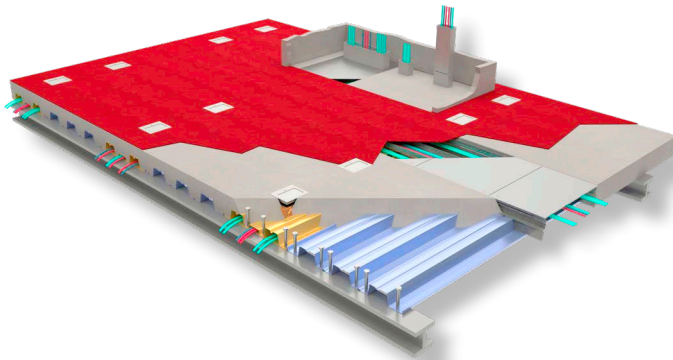
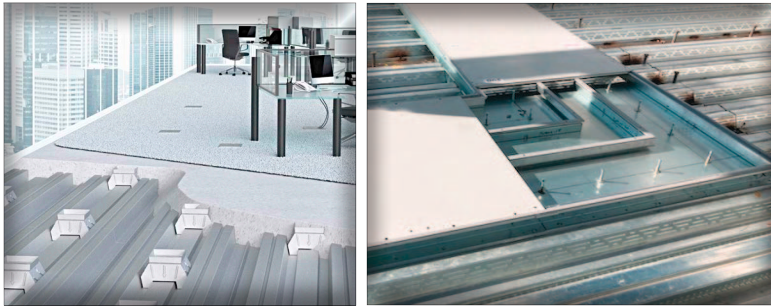




WHATEVER IT TAKES | WHENEVER YOU NEED IT



# DOWNSTREAM<sup>®</sup> CASINO RESORT



## DOWNSTREAM CASINO RESORT QUAPAW, OK

**Architect:**

JCJ Architect  
Hartford, CT

**General Contractor:**

Manhattan Construction Co.  
Tulsa, OK

**Electrical Contractor:**

M/E Engineering  
Buffalo, NY

**Cordeck System:**

N-R-G-FLOR+<sup>®</sup>  
In Floor Cellular Raceway System

The Quapaw Tribe of Oklahoma broke ground August 10, 2007 on the Downstream Casino and Hotel in Quapaw, OK. This slab-on-grade casino project involved specific electrical challenges. Cordeck was able to accommodate these unique needs with a customized feeder/trench system designed with five, seven, and nine compartments and numerous custom closet risers, often utilizing mitered trench pieces.

With the help of factory attached cross sections of the N-R-G-FLOR<sup>®</sup> Cell and Trench, this \$200 million dollar project was completed one month ahead of schedule and celebrated the grand opening on July 5th, 2008.

N-R-G-FLOR<sup>®</sup> and Walkerdeck<sup>®</sup> provide the ideal in floor wire management for on-grade construction of casinos, delivering flexibility, cost efficiency, and simplified installation.

Our Innovative In Floor Cellular Raceway is an In-Slab Wire Management System That Delivers Power and Data Where You Need it

VISIT OUR WEBSITE FOR A VIDEO INTRODUCTION TO OUR N-R-G-FLOR+<sup>®</sup> SYSTEM

infloorsystems@cordeck.com | 877-857-6400 | cordeck.com