



WHATEVER IT TAKES | WHENEVER YOU NEED IT

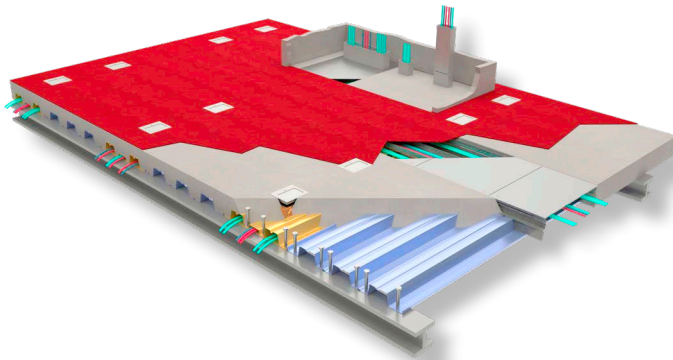
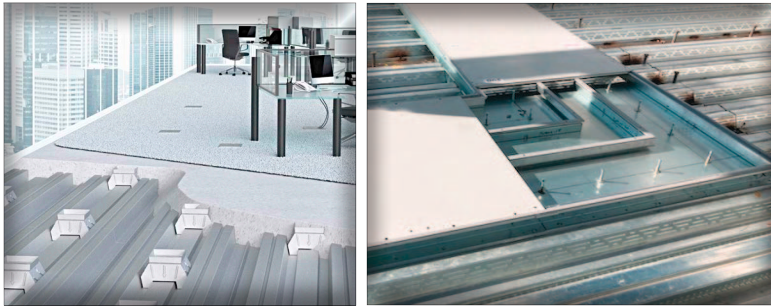


Photo Credit: Andy Ryan

MIT MEDIA LAB Cambridge, MA

Architect:

Leers Weinzapfel Associates
Boston, MA

General Contractor:

Bond Brothers
Everett, MA

Fabricator:

Cives Steel Company
New England Division
Augusta, ME

Electrical Engineer:

Consentini Associates, Inc
Cambridge, MA

Cordeck System:

N-R-G-FLOR+®
In Floor Cellular Raceway System

This six story, 163,000 square foot building, features architecture designed to accommodate many different possible futures. There are labs, conference rooms, social, administrative, exhibition and event spaces. Each of these areas are highly adaptable, allowing flexibility to respond to emerging research priorities.

Cordeck supplied the complete floor system including cellular deck for in floor power and data cable management, and composite deck, along with custom color acoustical roof deck and flashings.

A low life-cycle cost, secure, adaptable, and aesthetically pleasing wire management system provides economical, functional, and environmental benefits for owners and tenants throughout the life of the building.

Our Innovative In Floor Cellular Raceway is an In-Slab Wire Management System That Delivers Power and Data Where You Need it

VISIT OUR WEBSITE FOR A VIDEO INTRODUCTION TO OUR N-R-G-FLOR+® SYSTEM

infloorsystems@cordeck.com | 877-857-6400 | cordeck.com