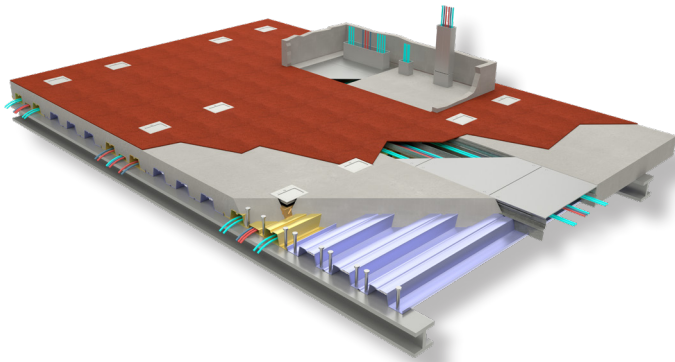
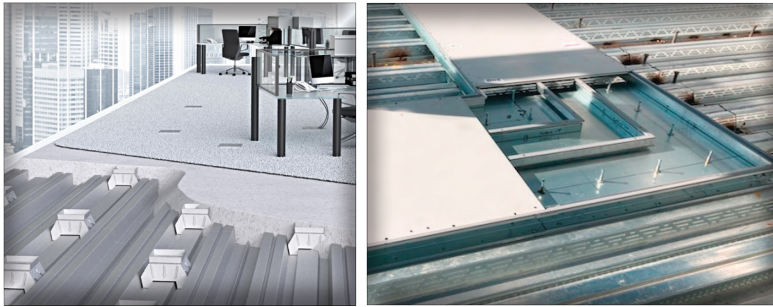




WHATEVER IT TAKES | WHENEVER YOU NEED IT



## SCARLET PEARL CASINO D'Iberville, MS

**Architect:**

SOSH  
New York, NY

**General Contractor:**

Roy Anderson  
Gulf Port, MS

**Electrical Engineer:**

M/E Engineering  
Buffalo, NY

**Electrical Contractor:**

Gephart Electric  
Robinsonville, MS

**Cordeck System:**

N-R-G-FLOR+®  
In Floor Cellular Raceway System

With the architectural design eliminating traditional support columns, having Cordeck's In Floor Cellular Raceway System installed is one of the key components in making the desired open floor plan possible. The layout design team is not constricted by conventional wall plugs dictating where electric gaming tables and slot machines are able to be placed. The ease in which the facility maintenance team is able to install an activation means less disruption to the flow of guests, minimizing gaming down time during the reconfiguration period.

With the second level gaming floor located directly above non-conditioned parking space, the design specified a 2" layer of extruded polystyrene insulation installed between the structural slab and the cellular raceway system. Cordeck's factory prepped raceway grounding plates accomplished the system's grounding, insulation fastening as well as a base to secure the cellular raceways prior to concrete topping pour all in one multi-function part, keeping material and installation costs to a minimum.

Our Innovative In Floor Cellular Raceway is an In-Slab Wire Management System That Delivers Power and Data Where You Need it

VISIT OUR WEBSITE FOR A VIDEO INTRODUCTION TO OUR N-R-G-FLOR+® SYSTEM

infloorsystems@cordeck.com | 877-857-6400 | cordeck.com